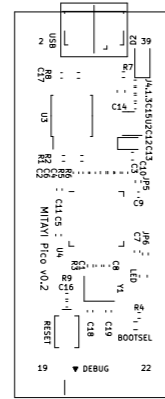
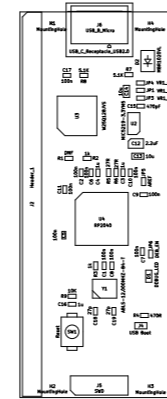


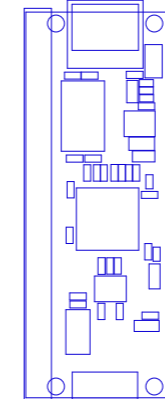
Front Side



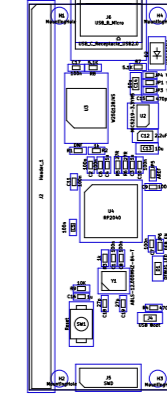
Front Silkscreen



Front Fab

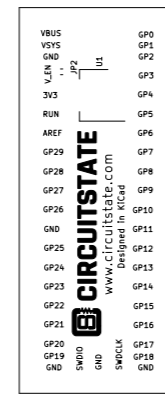


Front Courtyard

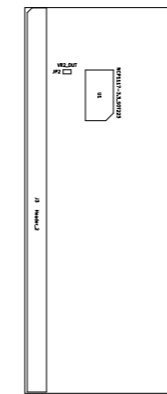


Fab + Courtyard

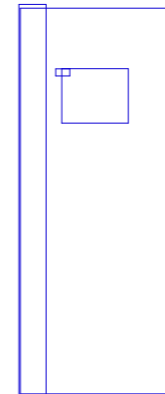
Back Side  
[ Flipped ]



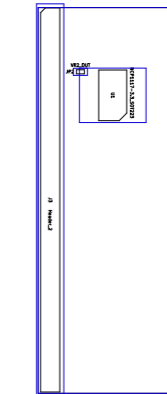
Back Silkscreen



Back Fab

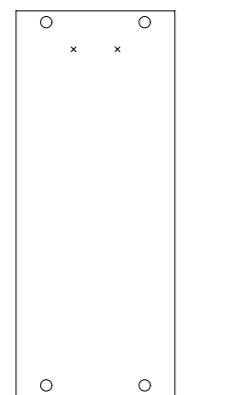


Back Courtyard



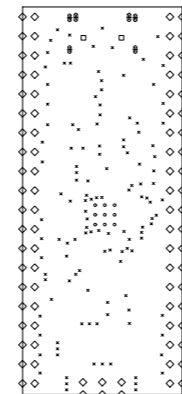
Fab + Courtyard

Holes - Non-Plated  
[ Front View ]



Drill Map:  
 x 0.650mm / 0.0256" (2 holes) (not plated)  
 o 1.500mm / 0.0591" (4 holes) (not plated)

Holes - Plated  
[ Front View ]



Drill Map:  
 • 0.300mm / 0.0118" (128 holes)  
 + 0.750mm / 0.0295" (8 holes)  
 + 0.750mm / 0.0295" (8 holes) + 6 slots  
 o 0.850mm / 0.0335" (2 holes)  
 o 1.000mm / 0.0394" (6 holes)

Notes

1. Courtyard overlaps do not cause issues.

Mitayi-Pico-RP2040-Rev-0.2-Assembly-Drawing

Unit : mm  
 Paper Size : A3 (420 x 297 mm)  
 Scale : Not to scale

Technical Reference Mitayi-Pico-RP2040-v0.2 KiCad Design	Created by Vishnu Mohanan		
Owner CIRCUITSTATE Electronics www.circuitstate.com info@circuitstate.com	Document type KiCad PCB Files	Date 12:34 PM, 17-12-2021, Friday	
	Title Mitayi-Pico-RP2040-Rev-0.2-Assembly-Drawing	DWG No.	Sheet 1/1
	Rev. 1.0	Status	